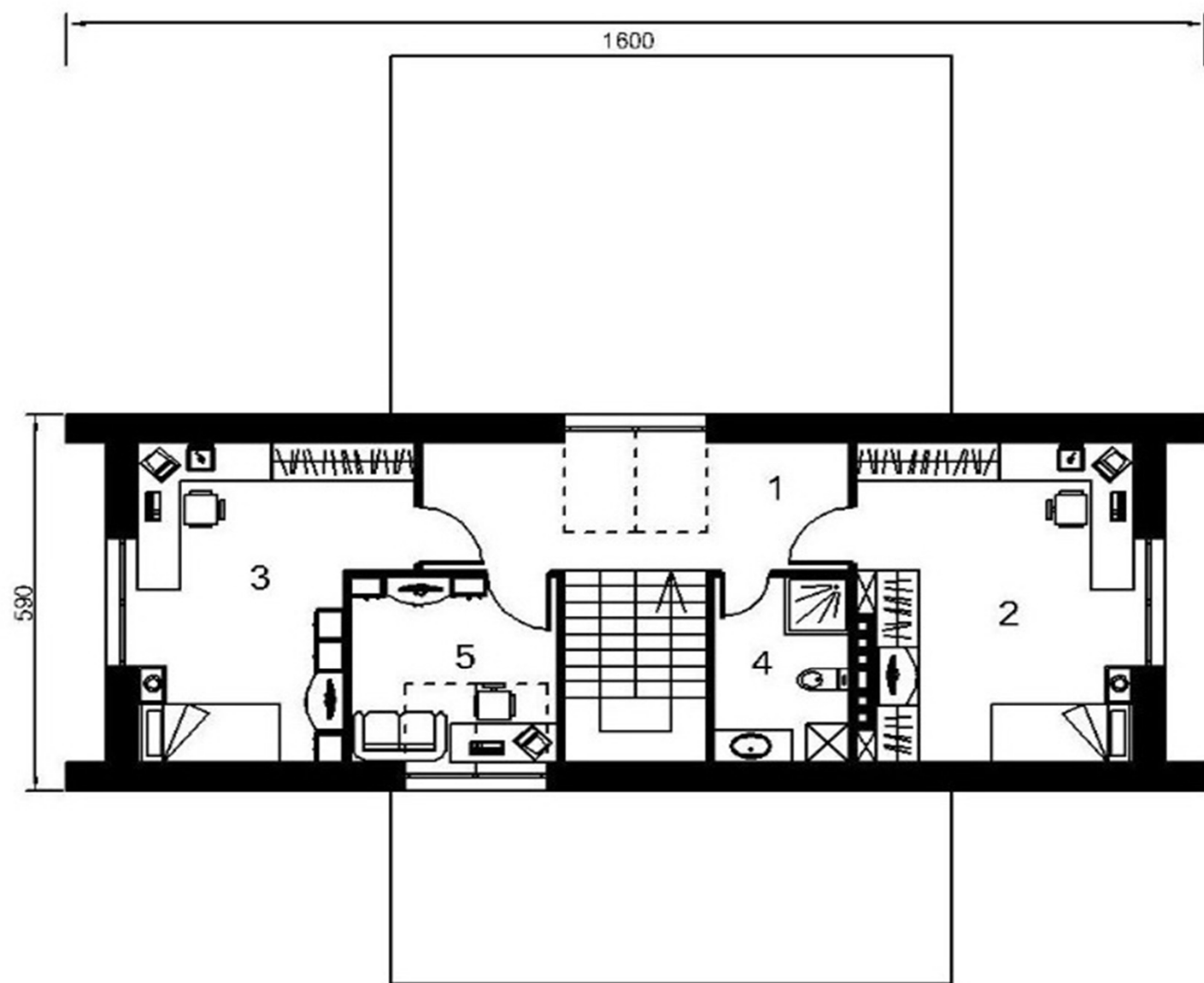


| | |
|--------------------------|----------------------------|
| 1. Vējtveris | 6.81 m ² |
| 2. Koridors | 14.05 m ² |
| 3. Katlu telpa | 9.44 m ² |
| 4. Sanmezgls | 11.31 m ² |
| 5. Virtuve un ēdamistaba | 20.85 m ² |
| 6. Skapis | 5.04 m ² |
| 7. Viesistaba | 30.9 m ² |
| 8. Guļamistaba | 13.6 m ² |
| 9. Skapis | 8 m ² |
| 10. Noliktava | 5.8 m ² |
| Kopā: | 125.8 m² |



| | |
|---------------|----------------------|
| 1. Koridors | 12 m ² |
| 2. Istaba | 19 m ² |
| 3. Istaba | 16.5 m ² |
| 4. Sanmezgls | 5.51 m ² |
| 5. Darbistaba | 8.41 m ² |
| Kopā: | 61.42 m ² |